

KTR series features

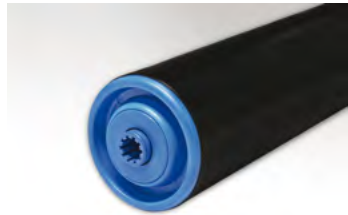
- Tube - PVC-U
- Bearing - plastic ball bearing with mild or stainless steel caged balls; rollers of diameters bigger than D=40mm also available with deep groove ball bearings
- Spindle - mild or austenitic stainless steel

Spindle type options

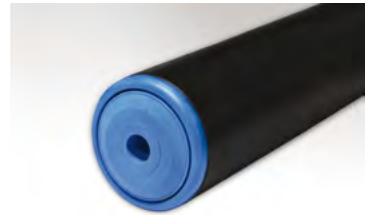
- GL - unmachined
- GZ - external thread
- GW - internal thread
- SP - spring loaded
- SW - hexagonal

Parameters

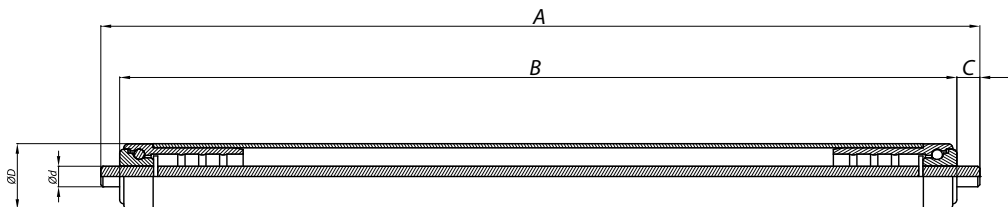
- A - total spindle length
- B - useful length
- C - roller tube distance
- D - roller diameter
- d - spindle diameter



Plastic ball bearing with caged balls.



Plastic ball bearing with deep groove ball bearing.



KTR series model range:

| Tube diameter x thickness Dxg | Spindle diameter d | Spindle type | Total spindle length - installation length A-B | Min. useful length B-2C |
|-------------------------------|--------------------|--------------|--|-------------------------|
| 20x1,5 | 6 | GZ M6 | 20 | A-14 |
| | | GL | 20 | A-4 |
| | | SP | 20 | A-4 |
| | 8 | GZ M6 | 20 | A-14 |
| | | GZ M8 | 20 | A-17 |
| | | GL | 20 | A-4 |
| 30x1,8 | 6 | GZ M6 | 20 | A-14 |
| | | GL | 20 | A-4 |
| | | SP | 20 | A-4 |
| | 8 | GZ M6 | 20 | A-14 |
| | | GZ M8 | 20 | A-17 |
| | | GL | 20 | A-4 |
| | | SP | 20 | A-4 |
| | 10 | GW M6 | - | A-20 |
| | | GW M8 | 20 | A-17 |
| | | GZ M10 | 20 | A-20 |
| | | GL | 20 | A-4 |
| | | SP | 20 | A-4 |

| Tube diameter x thickness Dxg | Spindle diameter d | Spindle type | Total spindle length - installation length A-B | Min. useful length B-2C |
|-------------------------------|--------------------|--------------|--|-------------------------|
| 40x2,3 | 6 | GZ M6 | 20 | A-14 |
| | | GL | 20 | A-4 |
| | | SP | 20 | A-4 |
| | 8 | GZ M6 | 20 | A-14 |
| | | GZ M8 | 20 | A-17 |
| | | GL | 20 | A-4 |
| | | SP | 20 | A-4 |
| | 10 | GW M6 | - | A-20 |
| | | GW M8 | 20 | A-17 |
| GZ M10 | | 20 | A-20 | |
| GL | | 20 | A-4 | |
| SP | | 20 | A-4 | |
| GZ M6 | | 20 | A-15 | |
| 50x2,0 | 8 | GZ M8 | 20 | A-18 |
| | | GL | 20 | A-5 |
| | | SP | 20 | A-5 |
| | 10 | GW M6 | - | A-20 |
| | | GZ M8 | 20 | A-18 |
| | | GZ M10 | 20 | A-21 |
| | | GL | 20 | A-5 |
| | | SP | 20 | A-5 |
| | 12 | GW M6 | - | A-20 |
| | | GW M8 | - | A-20 |
| | | GZ M10 | 30 | A-20 |
| | | GZ M12 | 30 | A-25 |
| GL | | 20 | A-5 | |
| SP | 20 | A-5 | | |
| SW11 | SW11 | 20 | A-5 | |

The other types and sizes of rollers on request.